

## Notes

This detail assumes that the raft is in good condition - constructed to BS EN 1992 (Eurocode 2), and that the structure as a whole is of sufficient mass and quality to resist heads of water pressure as required by BS8102.

It is recommended that the concrete be treated with Newton 906 Lime Inhibitor to limit the leaching of free lime from the concrete.

All construction joints (day joints, shrinkage joints, movement joints etc) should be waterproofed with Newton System 300 waterbars to limit water ingress through joints in the structure.

A) Newton Basedrain should always be laid level and connected to the sump chamber or safe gravity drainage with at least two Drainage Connectors, see drawings CDM-P03 (Basedrain Layout & Parts) and CDM-P09 (Titan-Pro Pump System). Construction joints to the floor should be protected by Newton Floordrain, see drawing CDM-D01 (Construction joints protected by Newton Floordrain). For supporting walls detailing please see drawing CDM-D03.

B) Newton Fibran XPS 500-C is placed below the Newton flooring membrane as a fully drained supporting spacer. The maximum floor load is 16 Mpa (1.6 tonnes/m<sup>2</sup>). Newton Fibran XPS 500-C has a thermal conductivity of 0.035W/mk and as such will make a significant contribution to the U-value of the floor.

C) Screed to manufacturers recommendations or current British Standard.

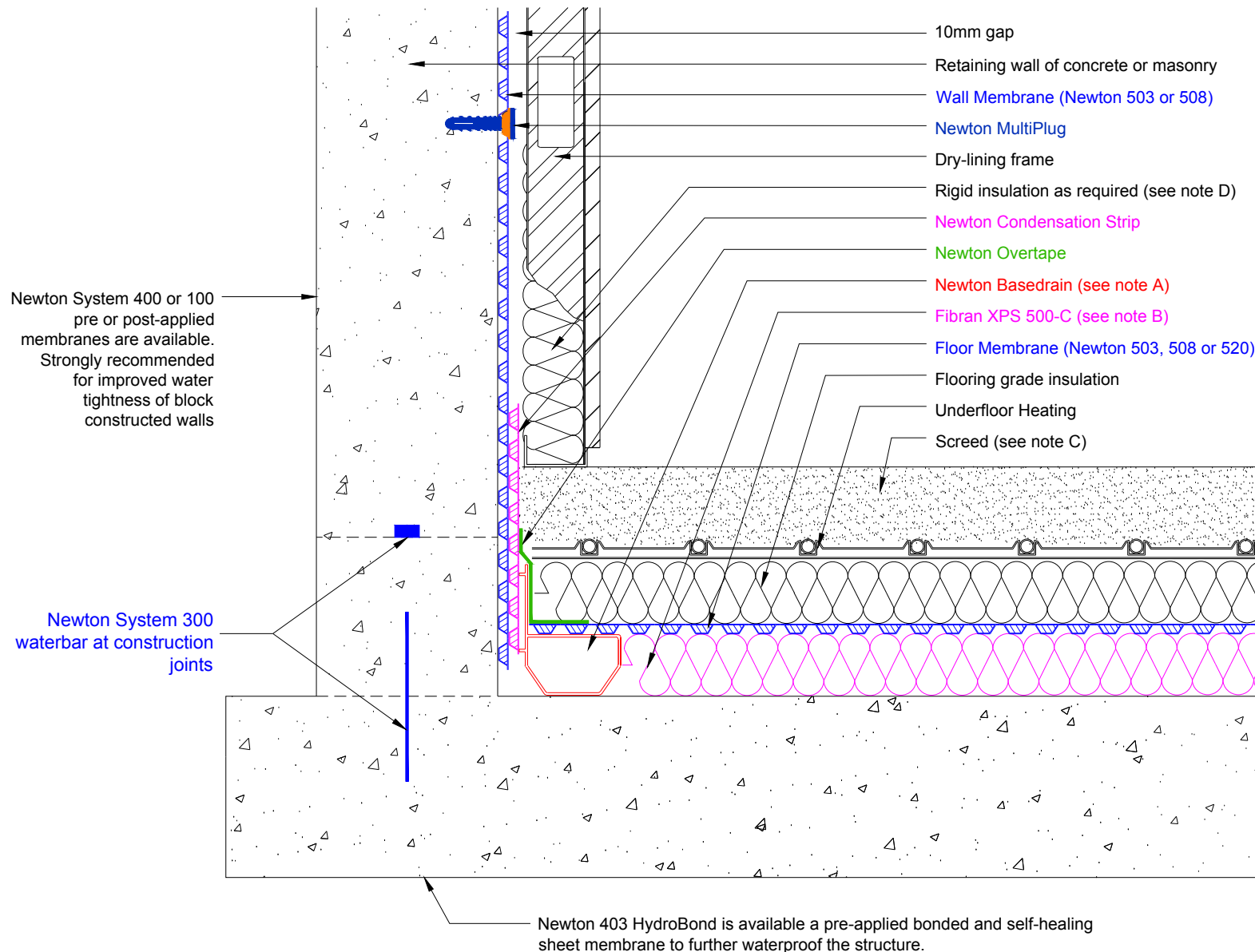
D) If insulating in front of the wall membrane a vapour control layer may be required to prevent interstitial condensation, see Guidance Note GD-01.

To access the details mentioned above, relevant NBS Clauses, product data and MSDS sheets, please visit Technical resources via [www.newtonwaterproofing.co.uk](http://www.newtonwaterproofing.co.uk)

Newton System 500

Internal cavity drain membrane system.

Typical installation to structure with raft foundation.



NOTE: This is a waterproofing detail. For the design of the structure, please use a professional designer. We strongly recommend that Newton waterproofing systems are installed by our NSBC registered contractors who will guarantee, insure and accept liability for both the design and the installation of our systems. Please refer to product data sheets before installation of our products. Newton Waterproofing Systems reserves the right to update drawings.



stonehouse

**Stonehouse Property Care Ltd**  
8 Centenary Business Park, Station Road,  
Henley-on-Thames, Oxfordshire, RG9 1DS Tel: 01491 577560  
[www.stonehousebasements.co.uk](http://www.stonehousebasements.co.uk)

Scale Not to scale	Drawing Reference SH-CDM-RA-01A	Original Reference	Drawing Revision d
Date 23/01/2017	Designed by DGB	Drawn by AJG	Checked by DGB